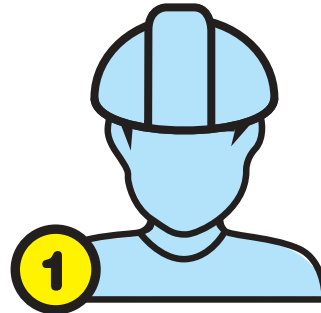


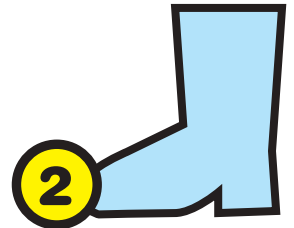
THE 6TH POINT OF PPE

Lock-Off Kit

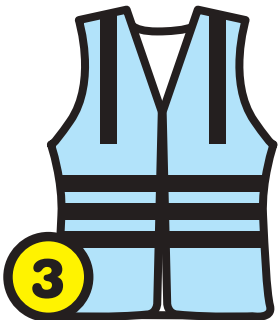
The Electrical Safety Roundtable proposes that the essential sixth item of PPE for all electrical workers should be a lock-off kit, to avoid the extreme risk of electrocution.



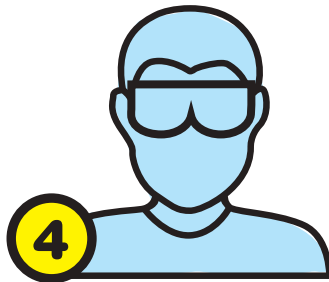
1 Hard Hats



2 Foot Protection



3 High Visibility Clothing



4 Eye Protection



5 Ear Protection



6 Lock-Off Kit

Michael's Story

Michael Adamson was a 26 year old experienced electrician who tragically died in a preventable electrical incident in 2005. He cut a cable marked 'NOT IN USE', which was in fact wired into a distribution board and was not safely isolated.

His employer's method statement said: "Before working on electrical equipment, it should be isolated and secured by means of a padlock".

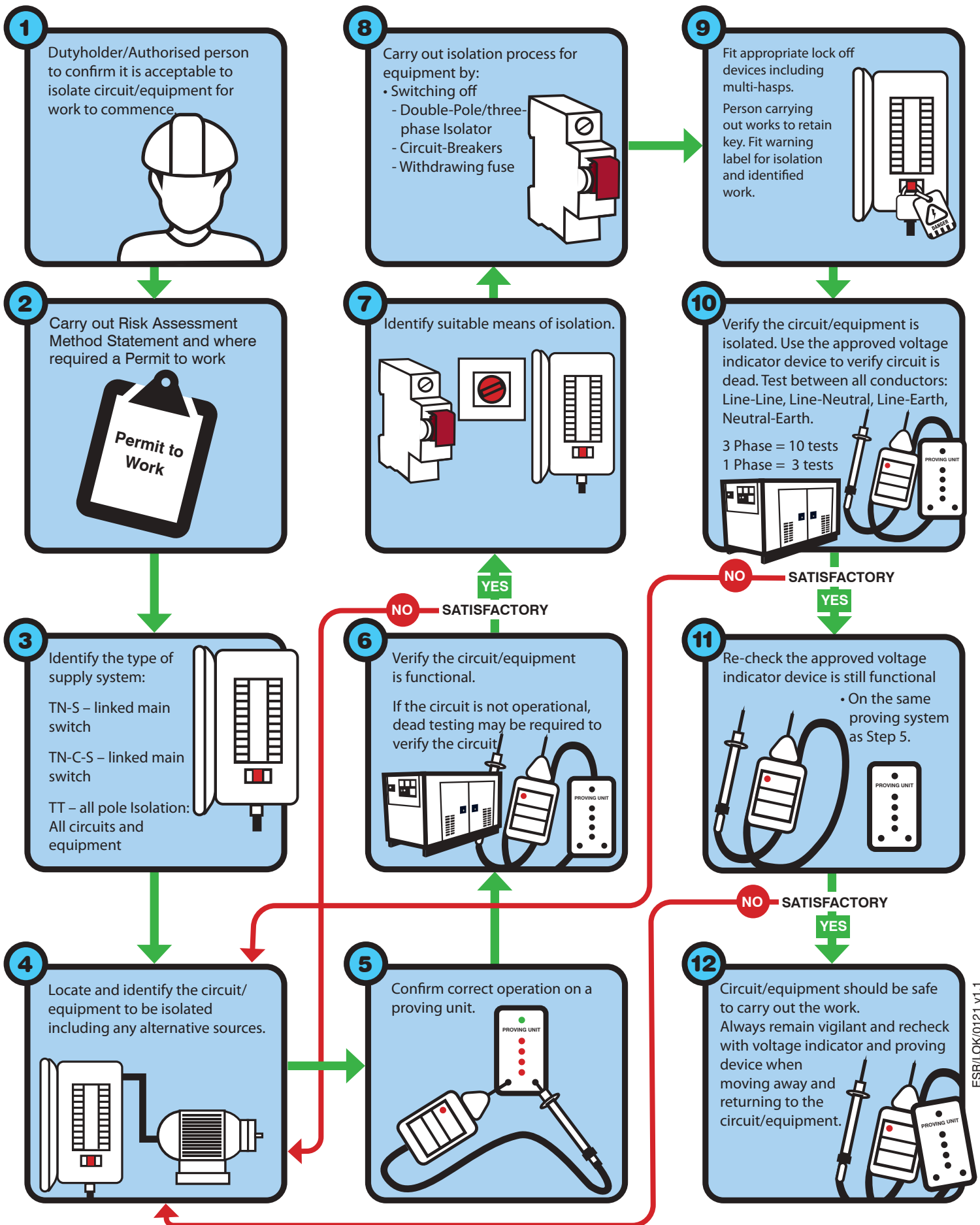
However, the devices for lock-off/tag-out were not provided by Michael's employer. Instead the practice on site was to use insulating tape. This fundamental safety procedure that electricians are taught was not being implemented by the electrical contracting industry.

www.michaels-story.net

Michael's sister, Louise Taggart now travels across the UK speaking to organisations and conferences and was recognised in 2018 as the 'Most Influential Person in Health & Safety in the UK' by Safety and Health Practitioner.



12 Easy steps to safe isolation



Process for re-energising the circuit/system

- Step 1:** After completing the work inspect and test in accordance with Part 6 BS 7671 (dead tests).
- Step 2:** Cancel permits (if issued), remove locking off devices, locks and labels and restore electrical supply.
- Step 3:** Complete testing (live tests). Commission circuit equipment.
- Step 4:** Complete and issue appropriate test certificates/reports.

